

North Northamptonshire Place Development & North Adult Social Care Strategy development

Ali Gilbert

ICS Director of North Place

Two Components

ONE North Northamptonshire
A New Sense of Place (being implemented)

TWO NNC
ASC Strategy Development (being developed)

TWO A. Moving Forward with Place (being implemented)

TWO B. Moving Forward with People (being developed)





North
Northamptonshire
Council

Two Components

ONE North Northamptonshire
A New Sense of Place (being implemented)

TWO NNC
ASC Strategy Development (being developed)

TWO A. Moving Forward with Place (being implemented)

TWO B. Moving Forward with People (being developed)



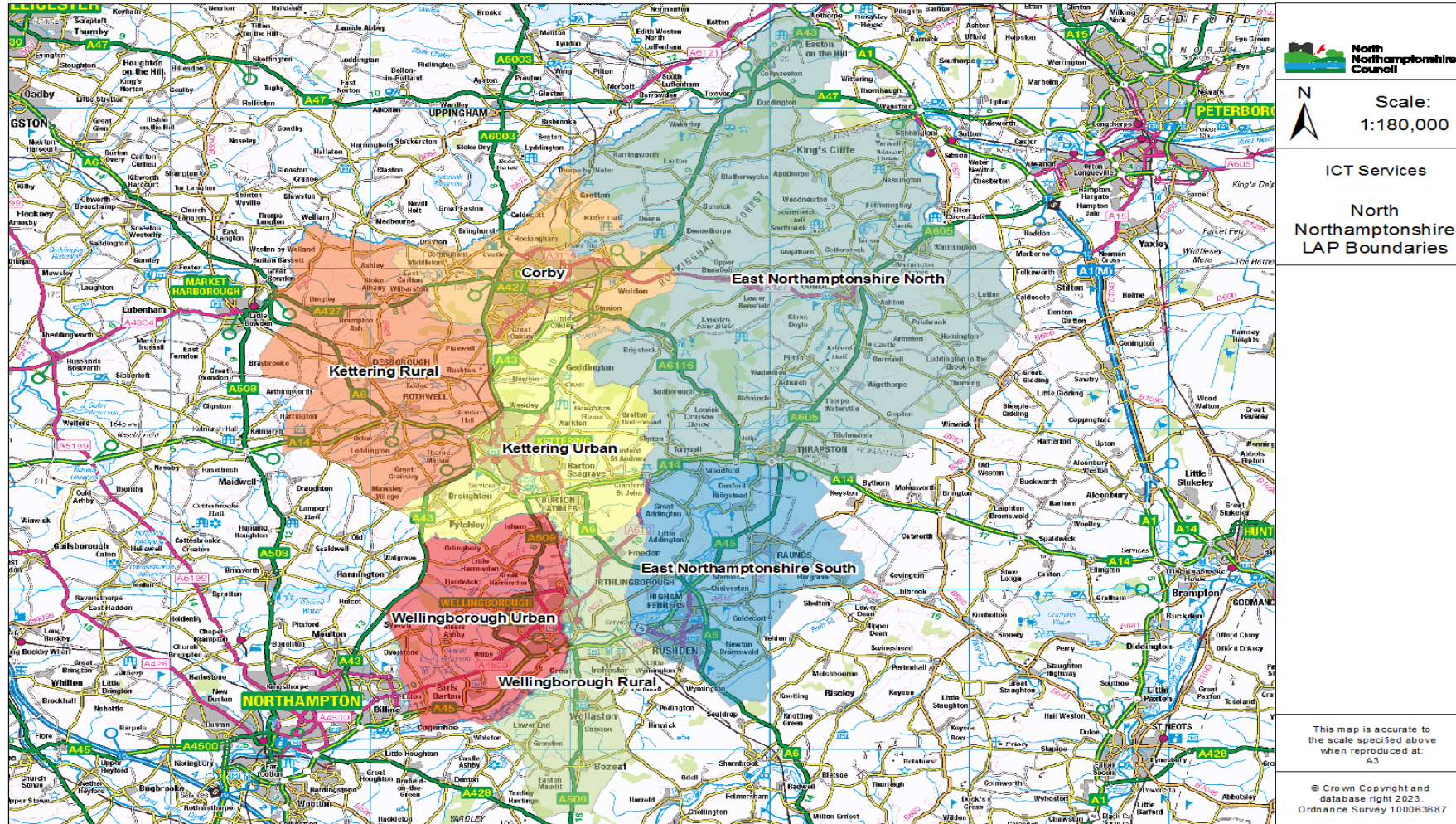
A NEW *sense* OF PLACE

North Northamptonshire
Place Development



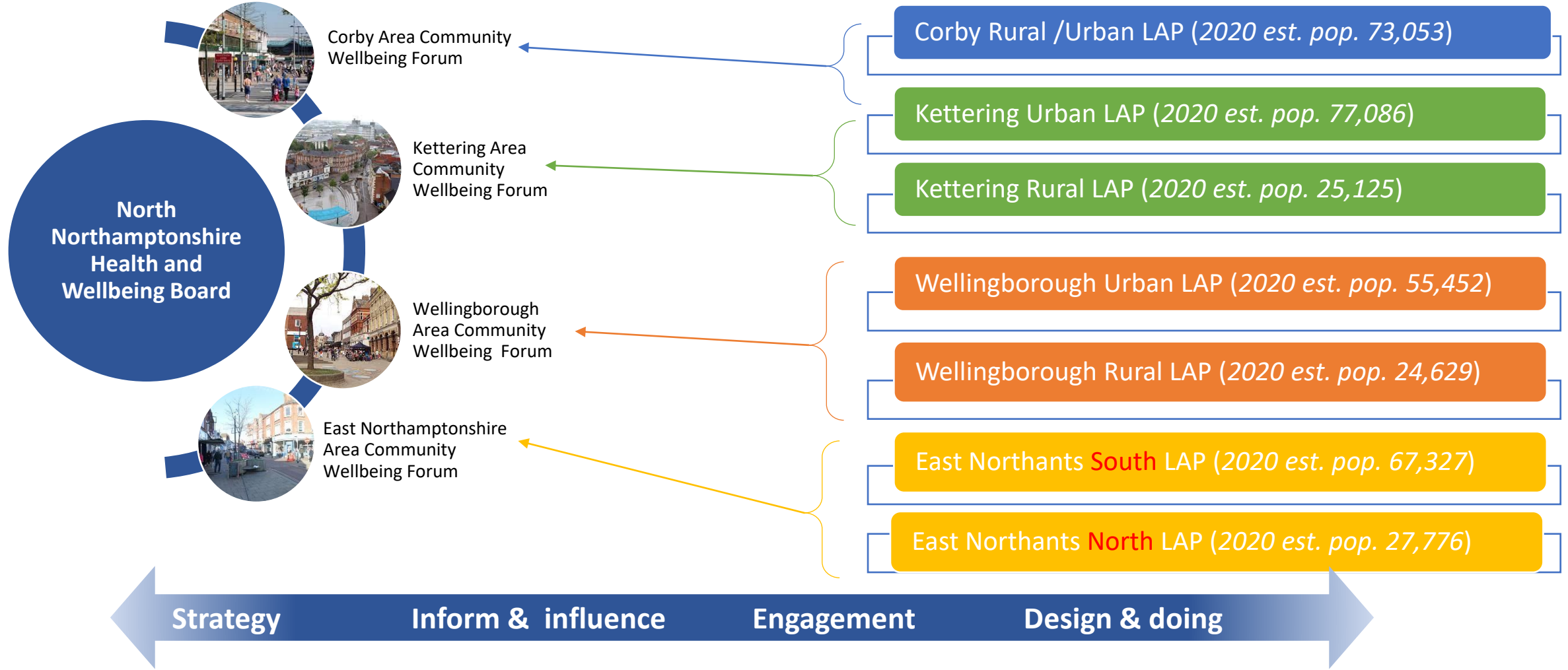
North
Northamptonshire
Council

North Place LAP boundaries



**North
Northamptonshire
Council**

Area Community Wellbeing Forums Local Area Partnerships



Two Components

ONE North Northamptonshire
A New Sense of Place (being implemented)

TWO NNC
ASC Strategy Development (being developed)

TWO A. Moving Forward with Place (being implemented)

TWO B. Moving Forward with People (being developed)



North Northamptonshire Adult Social Care Strategy 2024 - 2029

*The lives we
live*

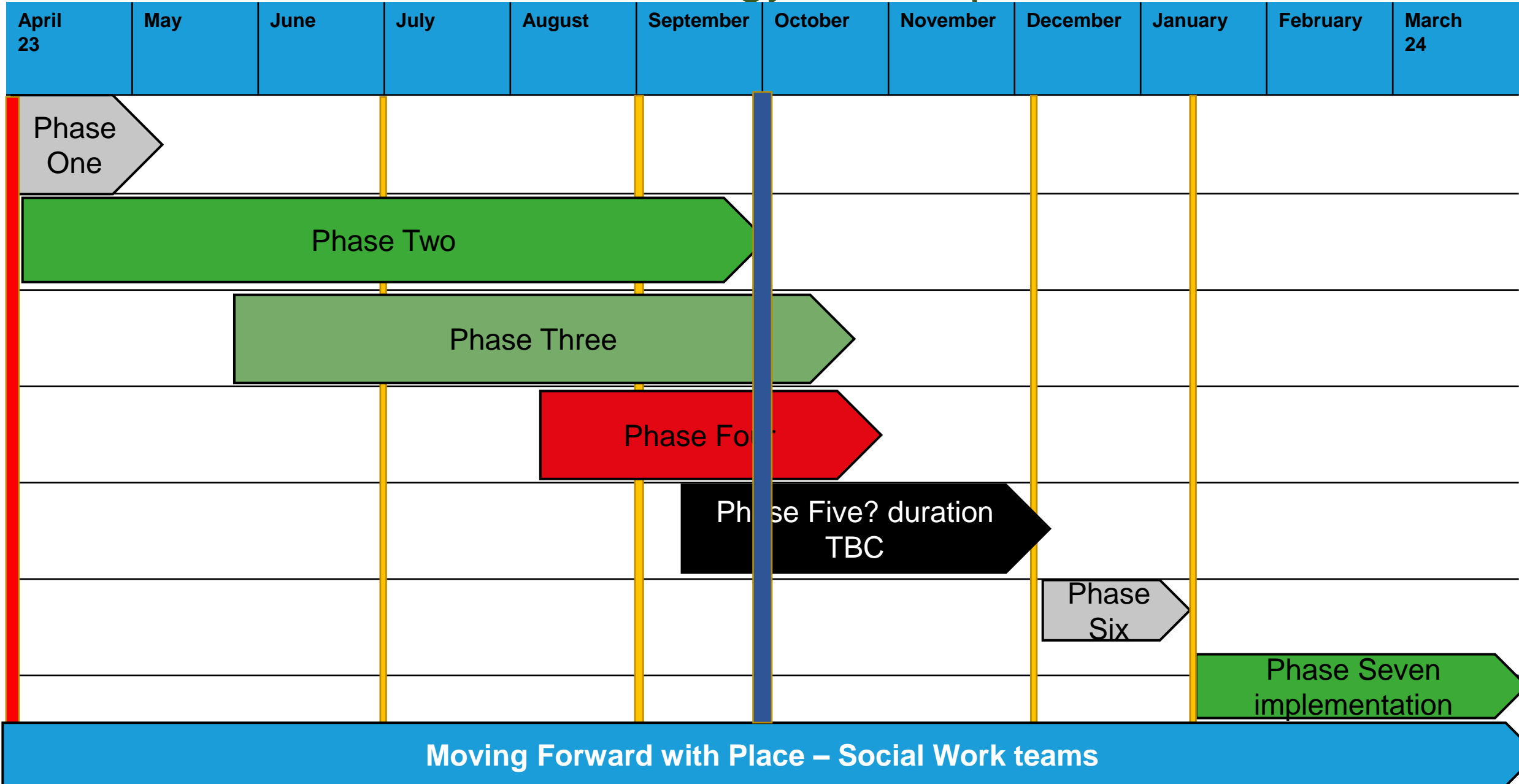


OUR APPROACH TO DEVELOPING WITH YOU



**North
Northamptonshire
Council**

NNC Adult Social Care Strategy Development 2023/2024

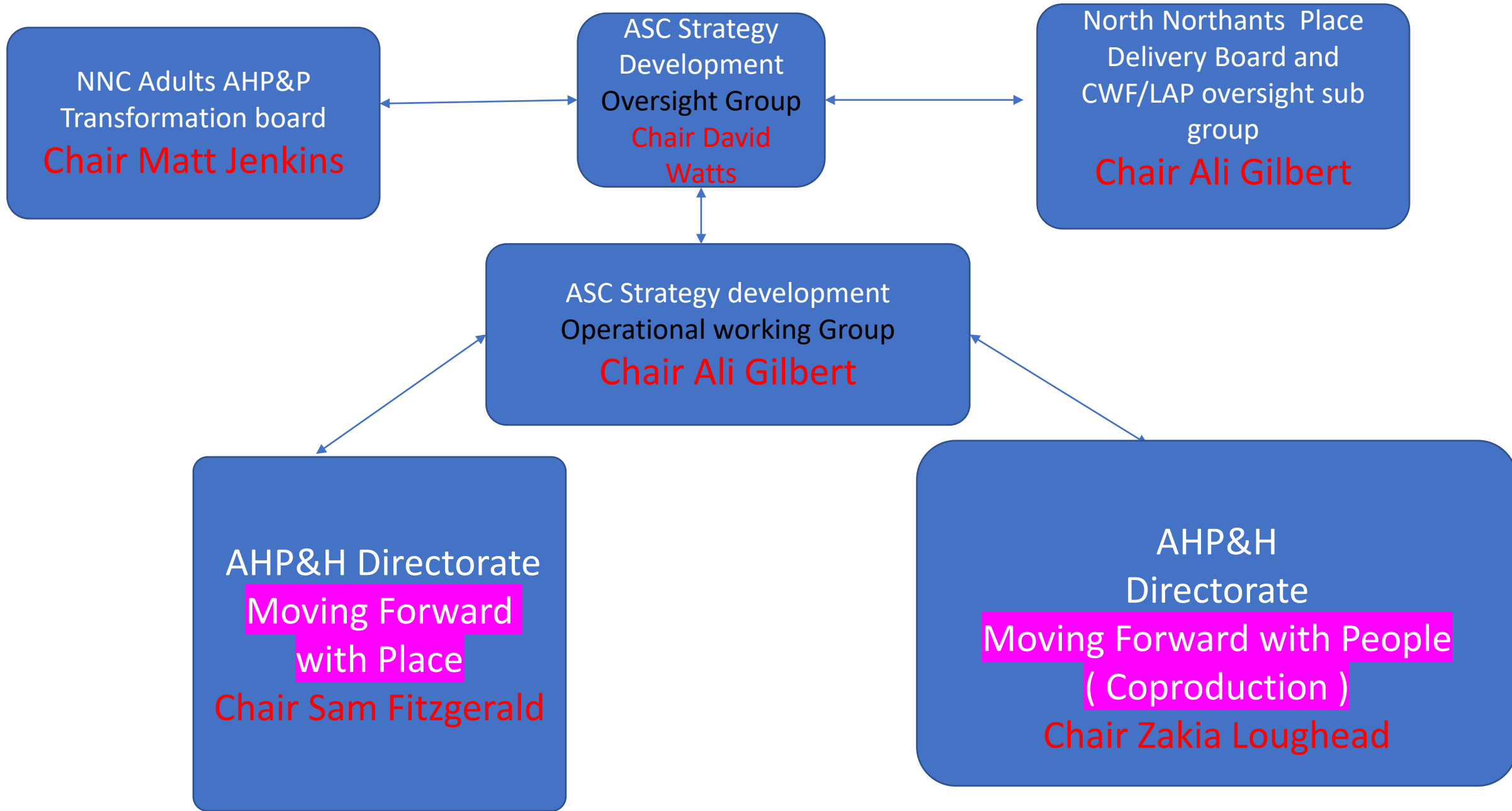


Phased Developmental Approach

- Phase 1 Research National/local strategy and best practice
- Phase 2 Developmental design of the future ASC operating model
- Phase 3 Developmental design of the future coproduction strategy
- Phase 4 Development consultation strategy / outcomes framework
- Phase 5 Consultation / engagement period
- Phase 6 Final strategy developed - NNC and system governance
- Phase 7 Embedding of the new way of working



NNC Adult Social Care Strategy development governance



Two Components

ONE North Northamptonshire
A New Sense of Place (being implemented)

TWO NNC
ASC Strategy Development (being developed)

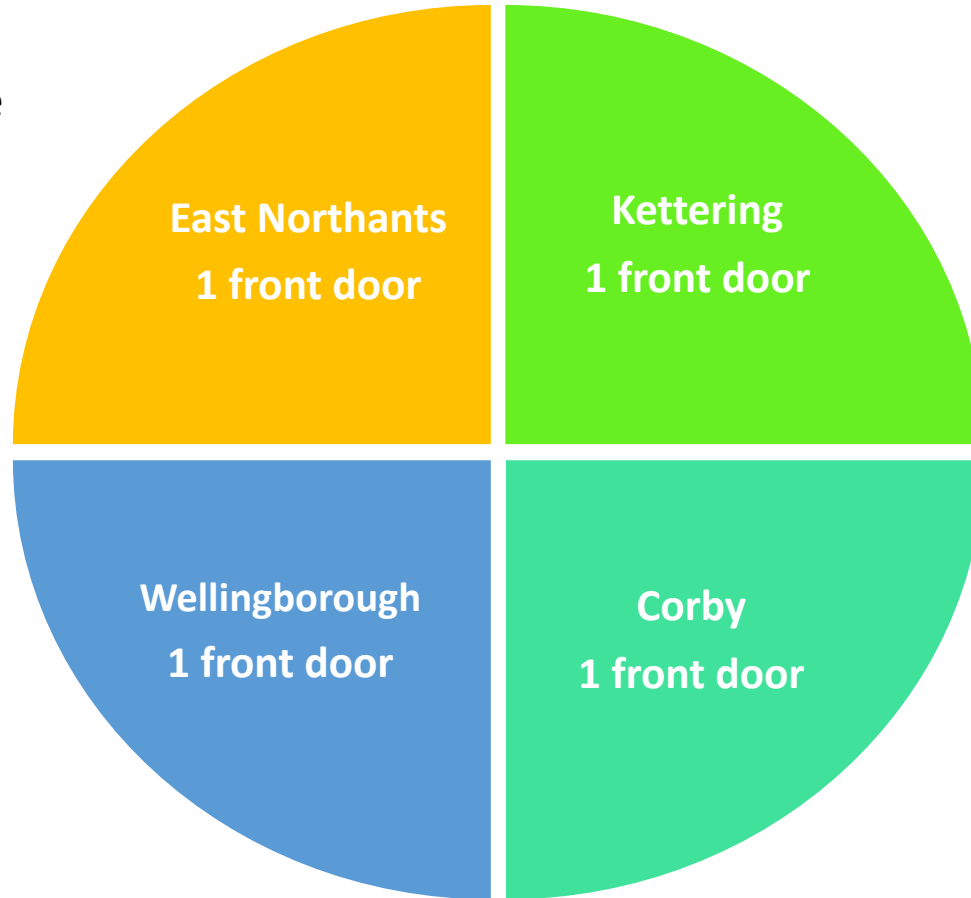
TWO A. Moving Forward with Place (being implemented)

TWO B. Moving Forward with People (being developed)

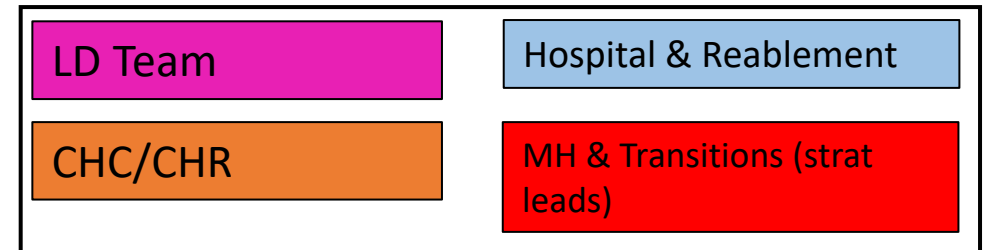


3. Moving Forward with Place - The Proposed 'Form'

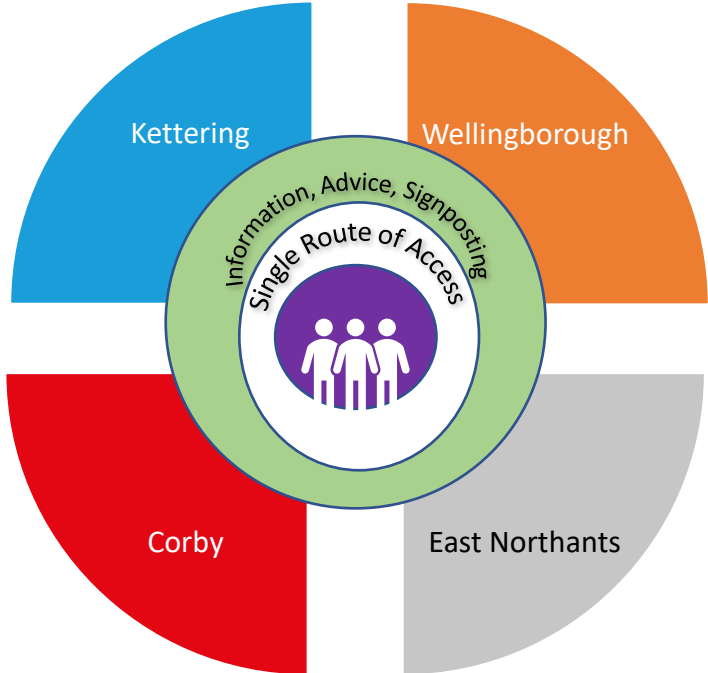
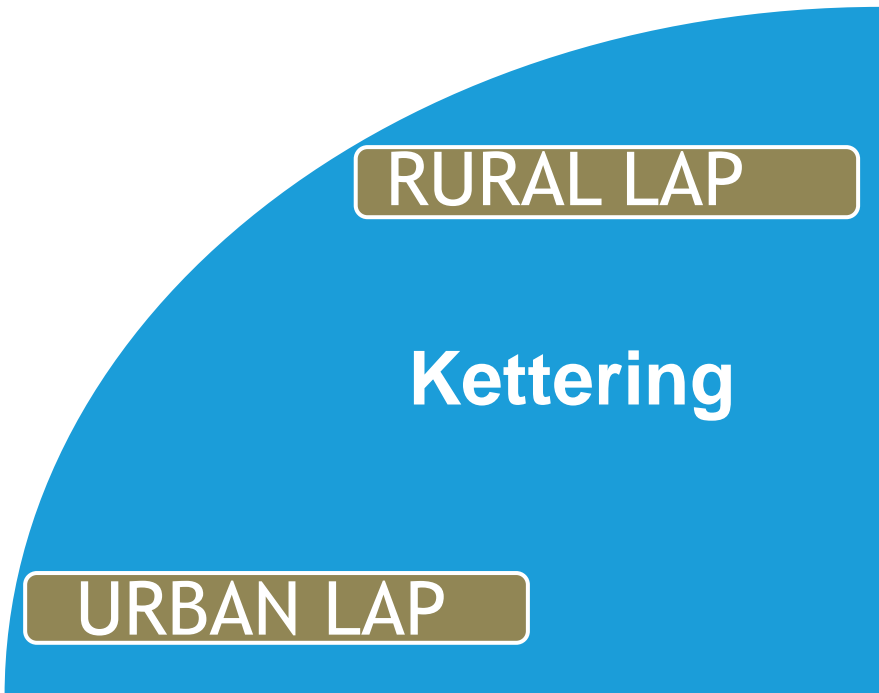
Head of Service



Head of Service



A NEW *sense* OF PLACE



- Corby Rural /Urban LAP (2020 est. pop. 73,053)
- Kettering Urban LAP (2020 est. pop. 77,086)
- Kettering Rural LAP (2020 est. pop. 25,125)
- Wellingborough Urban LAP (2020 est. pop. 55,452)
- Wellingborough Rural LAP (2020 est. pop. 24,629)
- East Northants South LAP (2020 est. pop. 67,327)
- East Northants North LAP (2020 est. pop. 27,776)



Two Components

ONE North Northamptonshire
A New Sense of Place (being implemented)

TWO NNC
ASC Strategy Development (being developed)

TWO A. Moving Forward with Place (being implemented)

TWO B. Moving Forward with People (being developed)



Moving Forward with People (co-production) Our Vision

Our vision is to co-produce Adult Social Care Services in a way that is meaningful, and person centred by incorporating our core values for North Northamptonshire which include:

Customer focussed For individual, their families and carers, this means they can expect person centred care, that is tailored to the circumstances, strengths and needs of the individual and demonstrate their desired outcomes.

Respectful This means individuals, families and carers can expect to be always treated with dignity, having support that recognises their capability and ambitions whilst promoting independence and being treated as equals.

Trustworthy Individuals, families and carers can expect open, honest and regular communication that involves active listening to ensure mutual understanding and where needed, additional support to aid participation and understanding. They can also expect to have increased involvement and recognition of their role as experts in their own lives. Individuals, families and carers can expect to be kept informed in ways and with frequencies that have been agreed with them.

Efficient This means that people who use services and their families can expect timely, high-quality information, advice, assessments and support to ensure that their individual needs are met. Individuals, families and carers can expect a shared understanding of what constitutes high quality care, how this is demonstrated and measured.

Supportive Individuals, families and carers are able to make decisions about what is right for them, their quality of life is improved, and they are enabled to participate as valued members of the wider community.